

DDoS and Cloud Access Services

MAX Participants Meeting

April 25, 2018

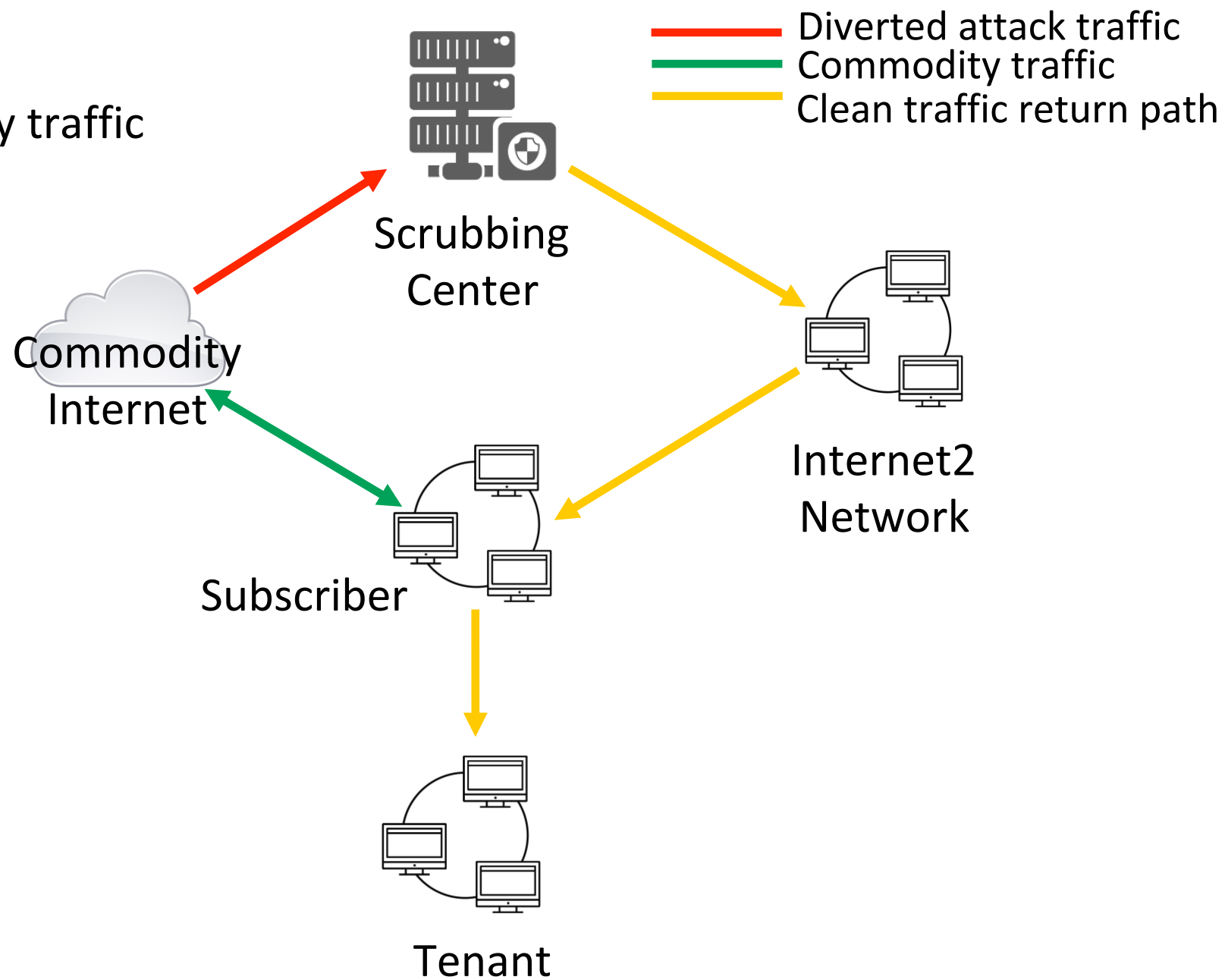
George K. Loftus

AVP Network Services, Internet2

Internet2 vDDoS Mitigation Service

- Internet2 in conjunction with MAX offers a cloud-based Distributed Denial of Service (DDoS) Mitigation Service provided by Zenedge/Oracle.
- Subscribers to the service are able to direct attack traffic to Zenedge, and carry the clean traffic back to them on their existing Internet2/MAX connection.

Protecting commodity traffic



Internet2 DDoS Mitigation Service

- The Subscriber has access to an aggregated amount of ‘clean pipe’ service (10G) to which the *community* has subscribed.
- MAX has a commit rate of 1G of clean pipe capacity but is allowed to burst into the available capacity on the clean pipe (up to 10G)
- Each Subscriber and Tenant will have access to Security Operations Center (SOC), a services portal and a direct connection via Internet2/MAX back to its edge.

Internet2 DDoS Mitigation Service

- Provides coverage for commodity traffic and R&E traffic
 - IPv4 and IPv6
 - Coverage of unlimited number of events
- Traffic is returned via a vrf provisioned during service onboarding
- Scrubbing is signaled via eBGP peering with provider SOC
 - Provider will announce /24 (IPv4) subnet globally to draw traffic to the scrubbing center and returned to connector/campus

Cloud Access Services

Cloud Exchange

Use of the community's existing 800 Gbps+ of layer 3 peering capabilities to the major cloud providers for advanced, community enabled access to cloud services.

Cloud Connect

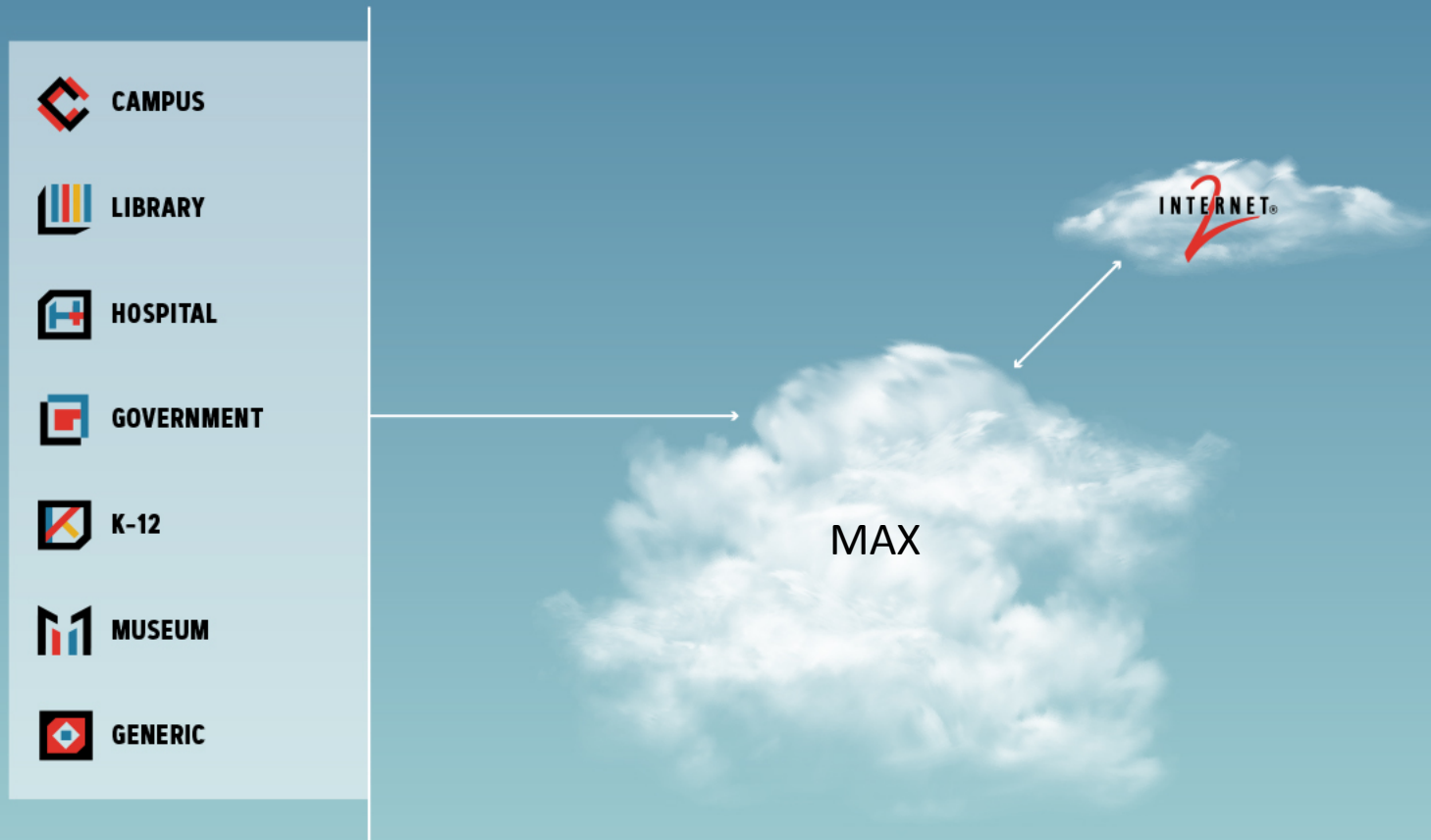
Microsoft Azure



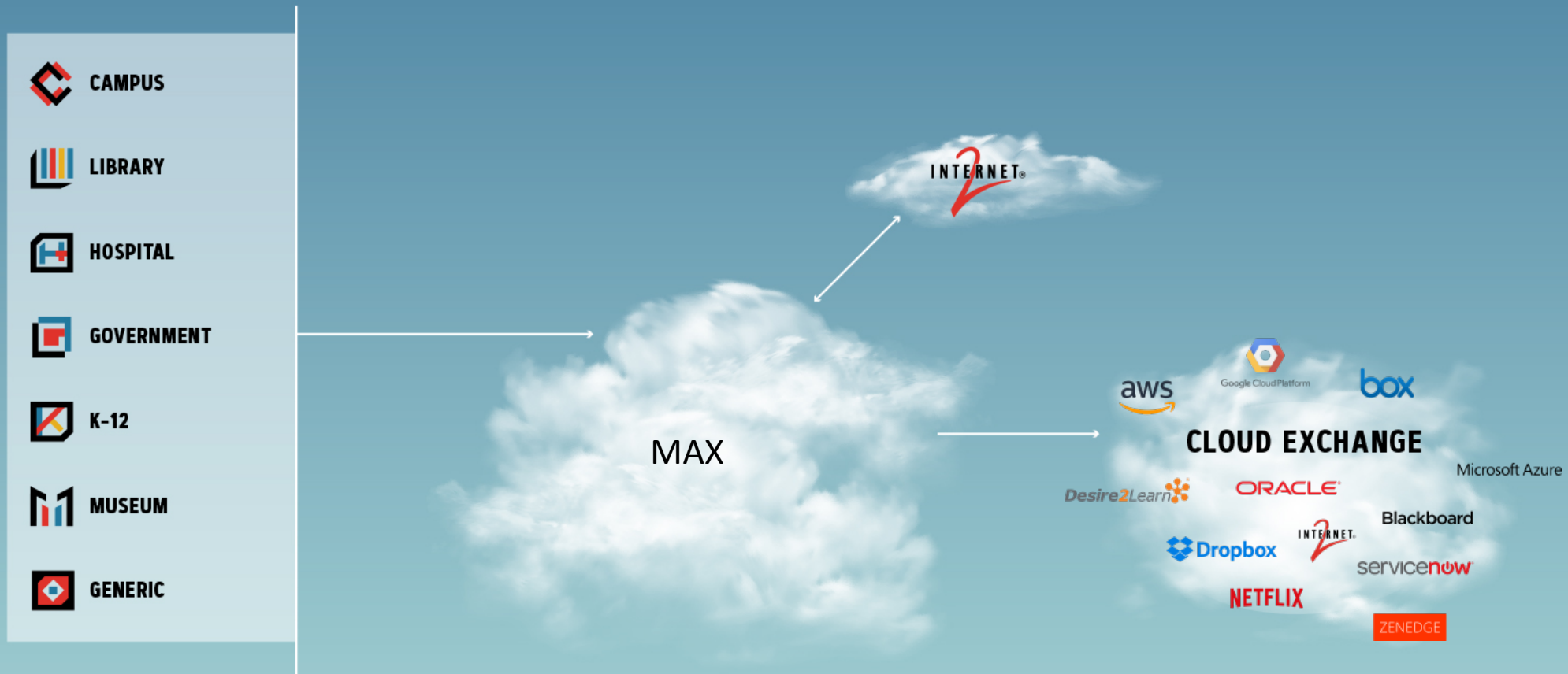
Google Cloud Platform

Enabling the Internet2 & Regional infrastructures to offer “direct-connect” ***private Layer 2 and Layer 3*** access to Microsoft, Amazon and Google cloud platforms.

Regional and Internet2



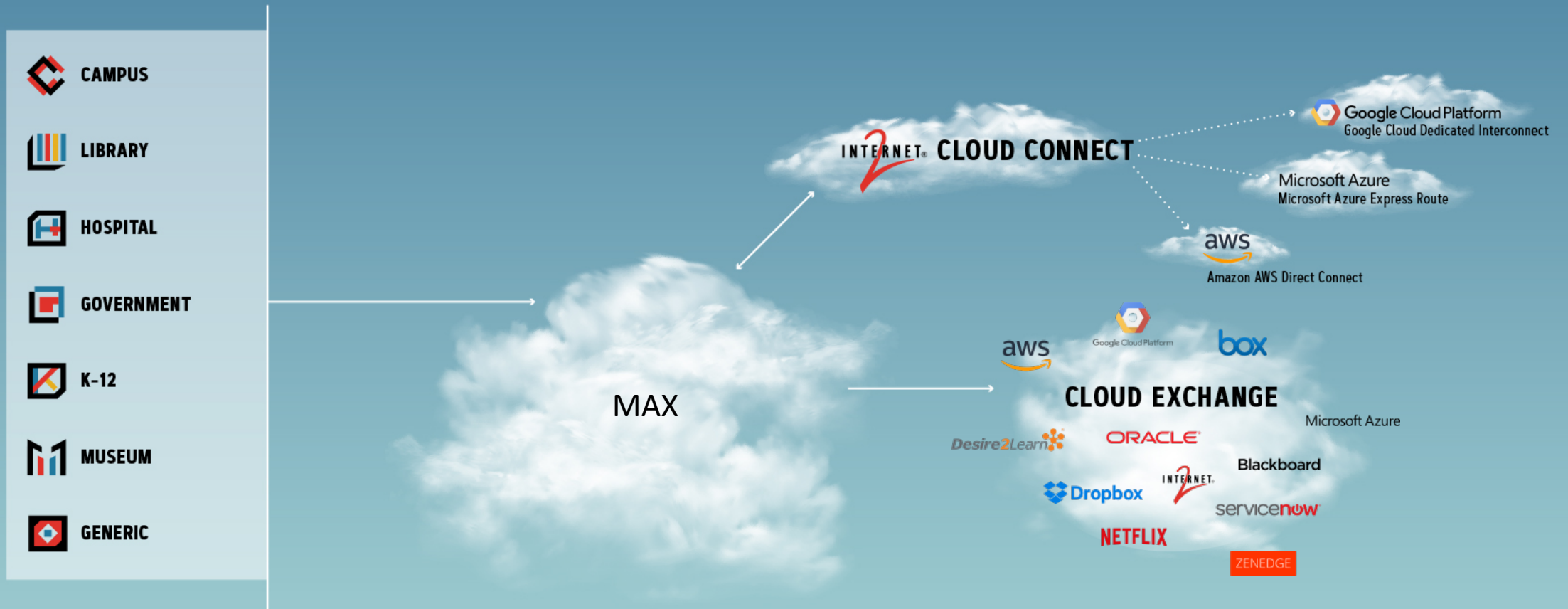
Regional and Internet2 Network Connectivity



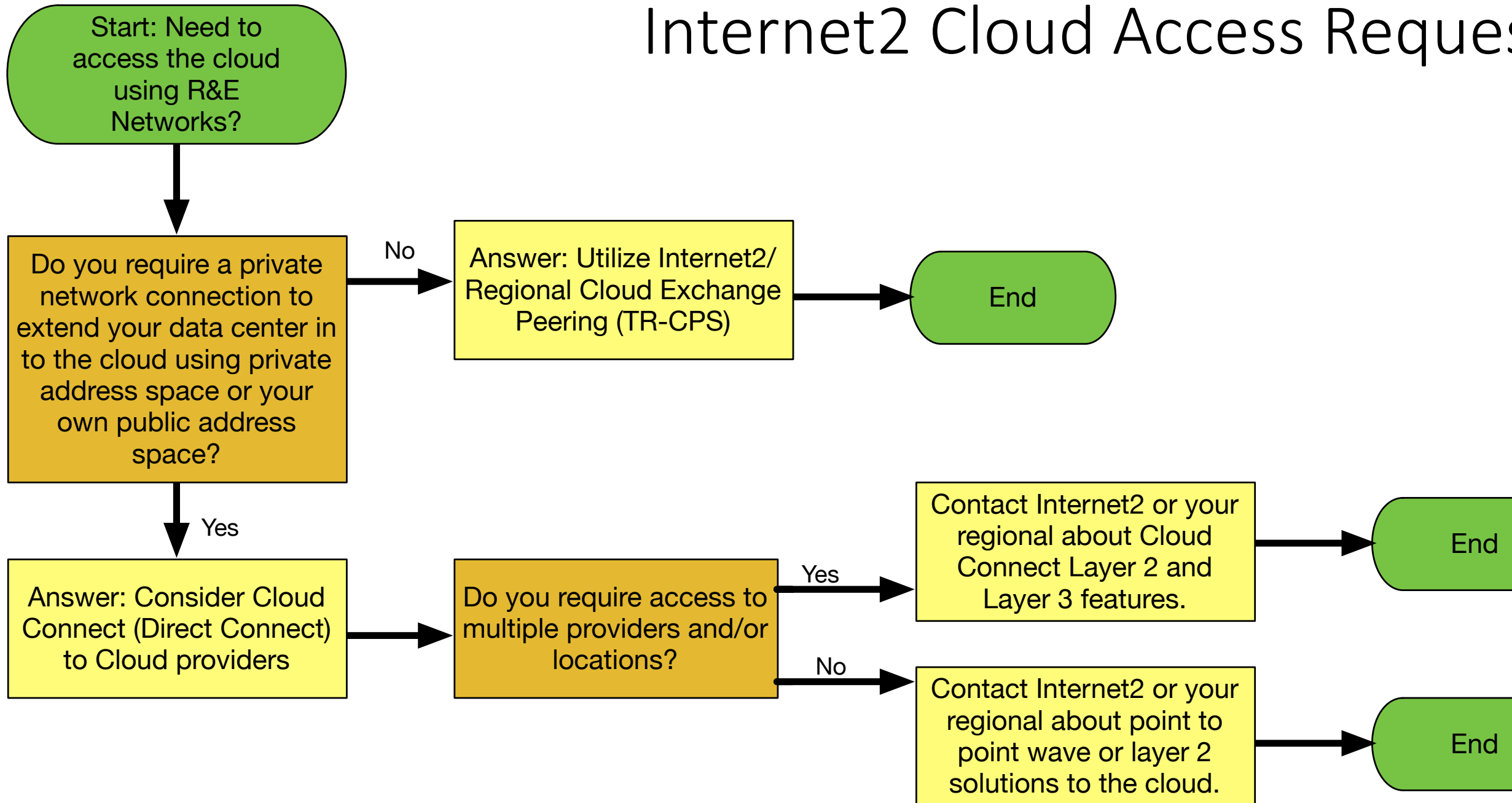
CLOUD EXCHANGE
available to Regional members
today, at no additional fee

- Regional provides its members with direct access to over 15 cloud service providers on the Cloud Exchange
- Cloud Exchange allows Regional members to have high performing on-net access to cloud service providers, avoiding the commodity internet and reducing latency
- Regional engineers have the ability to review and optimize member connections to the Cloud Exchange—along the entire path to help members make the most of their cloud connections
- Cloud Exchange was designed from the ground up to focus on hosting cloud providers most valued by the Research & Education community
- Member

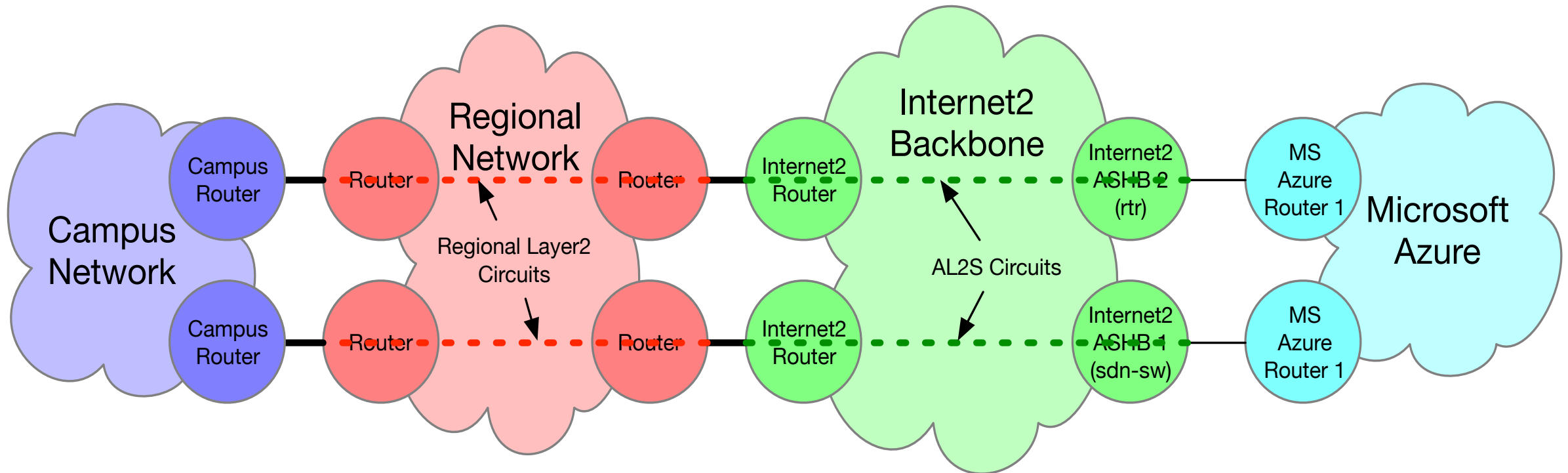
Internet2 Cloud Connect



Internet2 Cloud Access Request

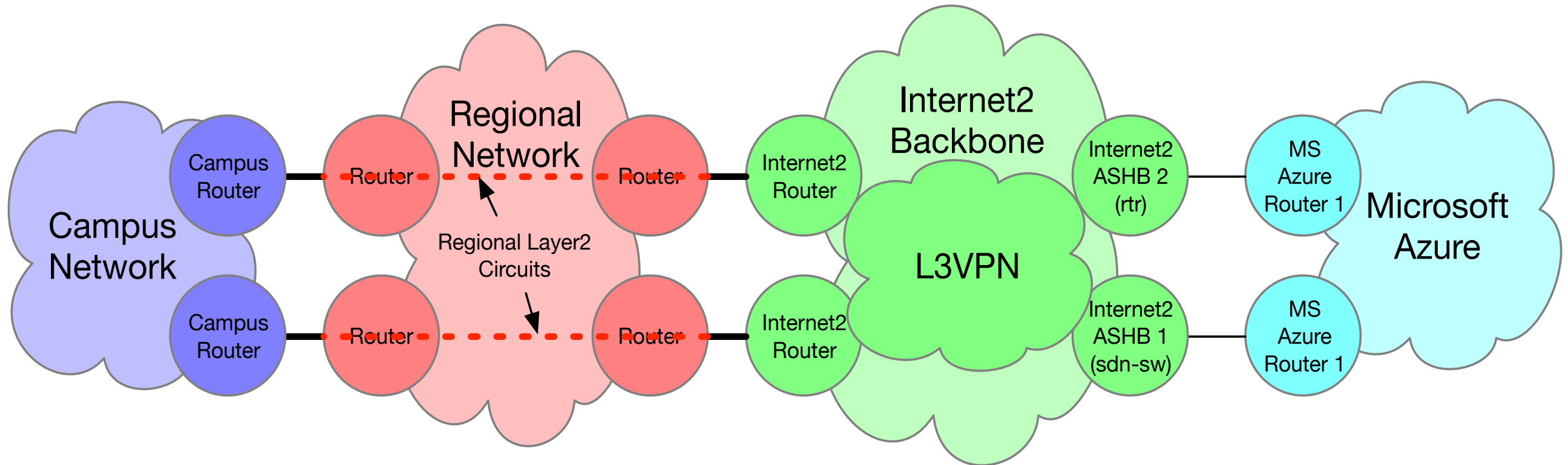


Layer 2 – AL2S Circuit Option



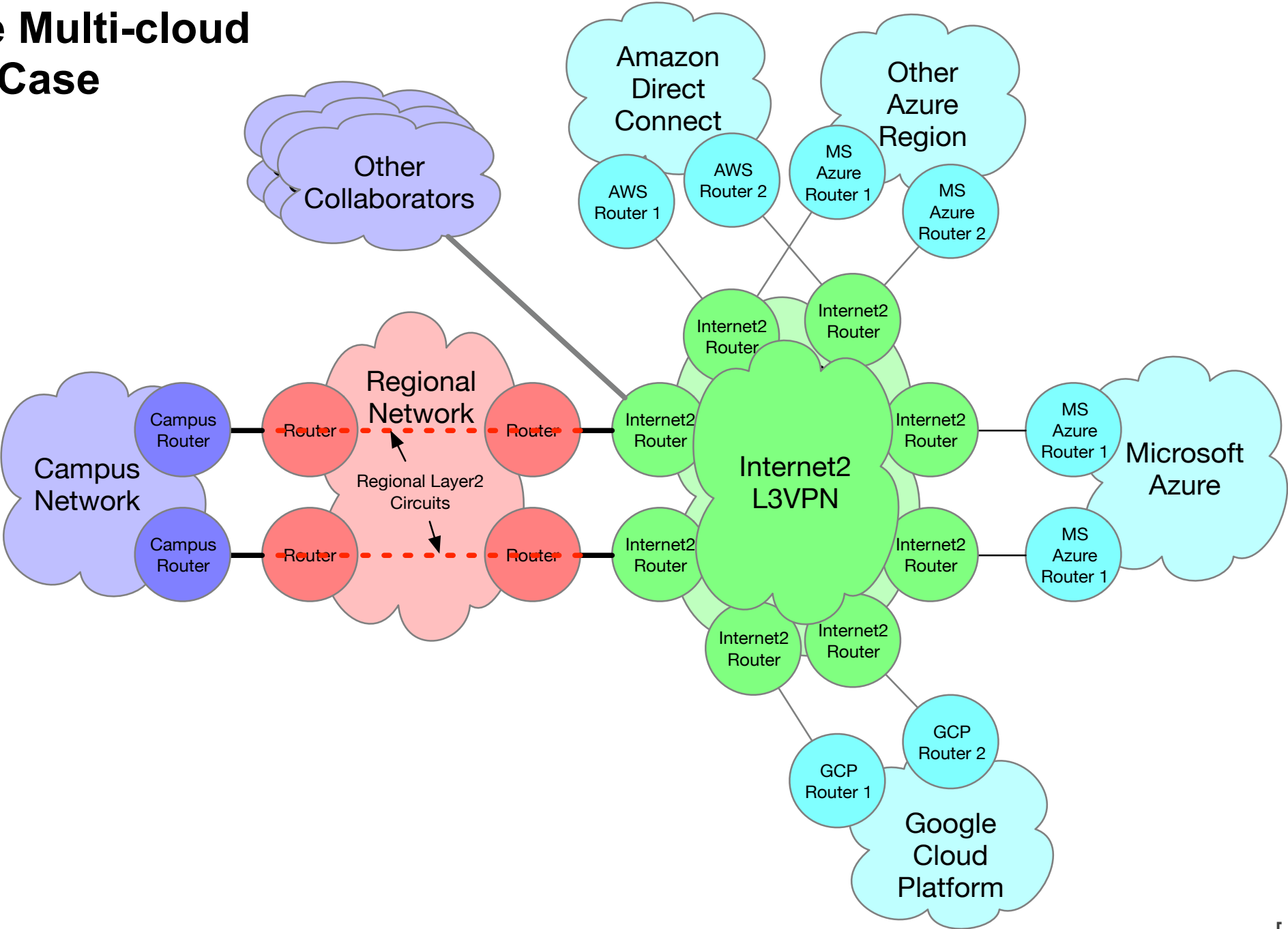
* While end-to-end redundancy is shown, redundancy is only mandatory for the interconnect between Internet2 and Microsoft.

Layer 3 – MPLS L3VPN Option



* While end-to-end redundancy is shown, redundancy is only mandatory for the interconnect between Internet2 and Microsoft.

Imagining Future Multi-cloud Community Use Case



Cloud Connect – Current Status

- **Microsoft:**

- Access:
 - Available: Ashburn & Chicago
 - Next Site: Dallas June '18
 - Future: West Coast - Bay Area Fall '18
- Members connected:
 - OSHEAN – Layer 2 & Layer 3
 - Georgia Tech – Layer 3
 - Vanderbilt – Layer 2

- **Amazon:**

- Access:
 - Available: Ashburn & Chicago
 - Next Site: Dallas July '18
 - Future: West Coast – Bay Area Fall '18
- Members connected:
 - MCNC – working to bring up pilot connection
 - University of Michigan – working to bring up pilot
 - OSHEAN – working with Brown University
 - Georgia Tech - working to bring up pilot connection

- **Google:**

- Access:
 - Available: Chicago
 - Ashburn, Dallas, Bay Area planned

